

2018 Chrysler Pacifica
Smart innovation dedicated
to uncompromised versatility.



IMPORTED FROM DETROIT®



Long and winding roads reveal panoramic views within the purposefully planned, kid-friendly road-trip vehicle. Your travels will inspire while ensuring the well-being of all your beings with over 100 standard and available safety and security features. The available seating for eight offers plenty of elbow room, as well as your turn to relax, needing only to focus on the road ahead. The ergonomic advantages of Pacifica make it easy to count on a peaceful trip.

No-compromises minivan.

The Chrysler Pacifica offers an unprecedented level of functionality, versatility, technology and bold styling while delivering innovative fuel and hybrid powertrains. The available Uconnect® Theater with dual HD touchscreens and built-in games, along with a full array of available comfort and convenience technologies, including Stow 'n Vac integrated vacuum, tri-pane panoramic sunroof, hands-free sliding doors and liftgate, class-exclusive^{1*} Stow 'n Go® seating, and storage, are all part of the ideal minivan for today's families.



*A note about this brochure: all disclaimers and disclosures can be found on the back cover.



Here's to creating balance in a busy world.

You are not simply a parent, coach, carpooler or commuter — you're a traveler, teacher, worker, fixer, breadwinner, trusted caregiver and so much more on any given day. That's why every day, you're prepared to answer the call. And why the Chrysler Pacifica is here to serve your real life with care as the most family friendly minivan in its class.²



Chrysler Pacifica and Pacifica Hybrid



19 city / 28 highway mpg*

Pacifica S Appearance Packages for a tougher touch of bold styling.

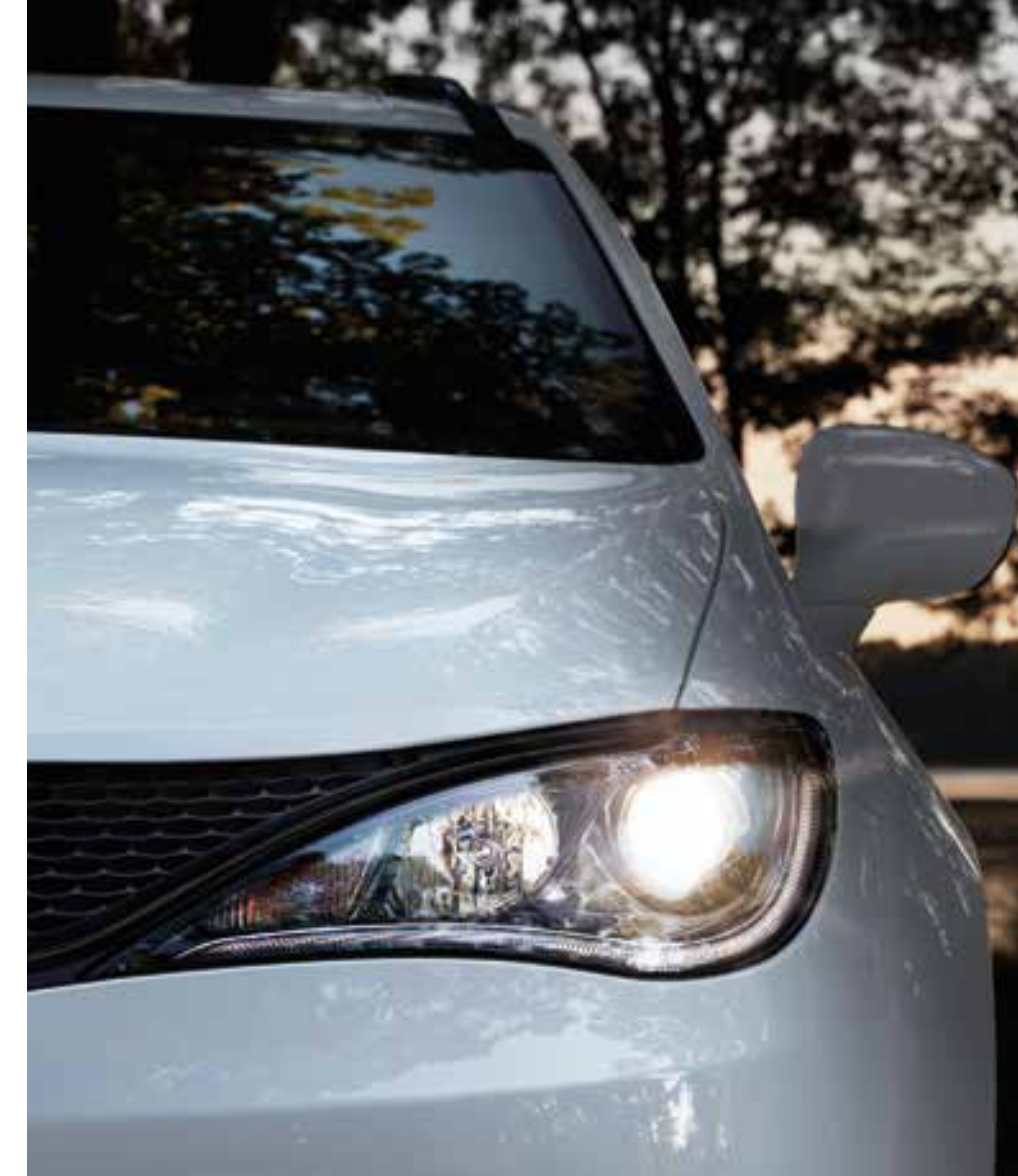
The new S Appearance Packages offer exterior features that speak to your brazen side, such as unique 18- or 20-inch Black Noise wheels, Black Stow 'n Place® roof rack, Black Chrysler grille wing badge and “S” badge, Black daylight opening (DLO) moldings and Black grille surrounds. Bringing the feeling inside, the leather-wrapped steering wheel sets the pace along with distinctively sporty S Appearance Package seats.

Strong and efficient for on-the-go drivers.

The Pacifica includes a powerful yet economic powertrain, with the standard 3.6L Pentastar® Variable Valve Timing (VVT) V6 engine non-Hybrid models delivering an impressive 287 horsepower and 262 lb-ft of torque. The pioneering mechanics of a standard 9-speed automatic transmission are a primary factor of the driving dynamics and fuel efficiency of up to 19 city / 28 highway mpg.*

Ride and handling.

The structure and independent rear suspension optimize ride and handling, with a front suspension cradle configured for strength, stiffness and redefined driving dynamics. The low-rolling-resistance tires are a key component to outstanding highway fuel efficiency, while stiffer wheel designs help reduce noise, vibration and harshness (NVH) factors.

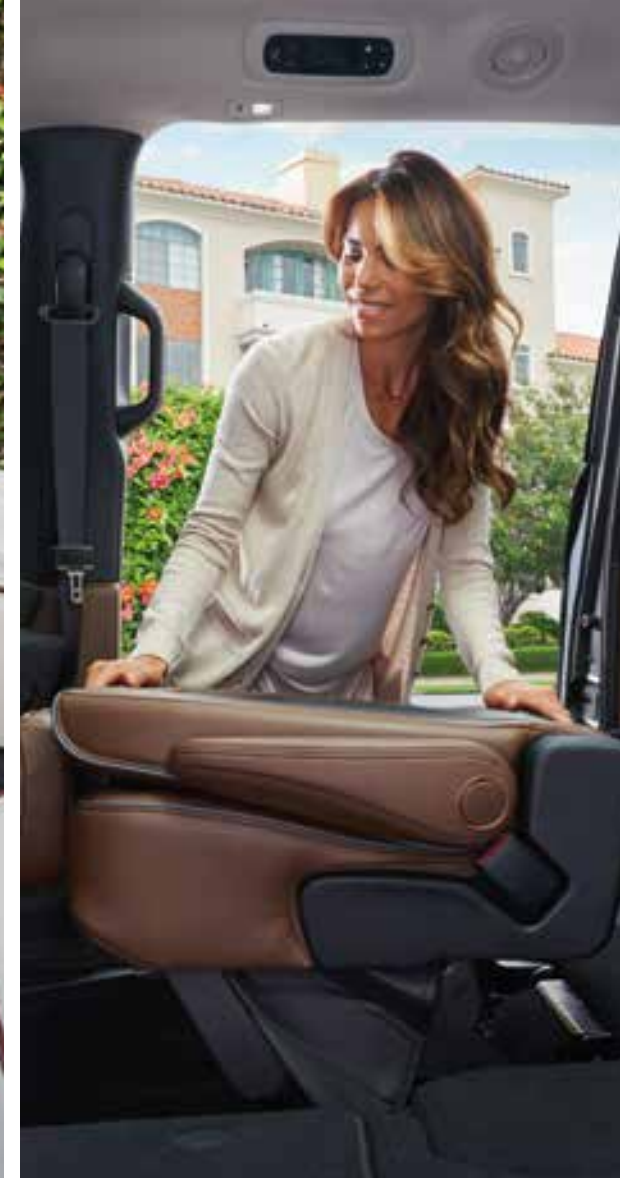


A bright spot in the drop-off lane.

The ultimate family vehicle displays a sleek, athletic stance with a sculpted body. Features like expansive side window panes and the available LED lighting shed plenty of light on the task at hand.

Pacifica is powered to deliver robust SUV-like handling

*Based on EPA-estimated fuel economy ratings. 18 city / 28 hwy mpg (3.6L V6 with 9-speed automatic transmission), 19 city / 28 hwy mpg (3.6L V6 with 9-speed automatic with Engine Stop/Start (ESS) technology). Actual mileage may vary.



Class-exclusive¹ Stow 'n Go[®] seating and storage system saves workouts for the gym.

Designed to be used without having to remove³ the seats, the Stow 'n Go system is the key to smooth transitions. With the available Auto Advance 'n Return feature, stowing gear or the seats in the second-row bins is as simple as pressing a button to slide the front seats forward, allowing easy access to the in-floor bin.



What's easy for them makes your life easier.

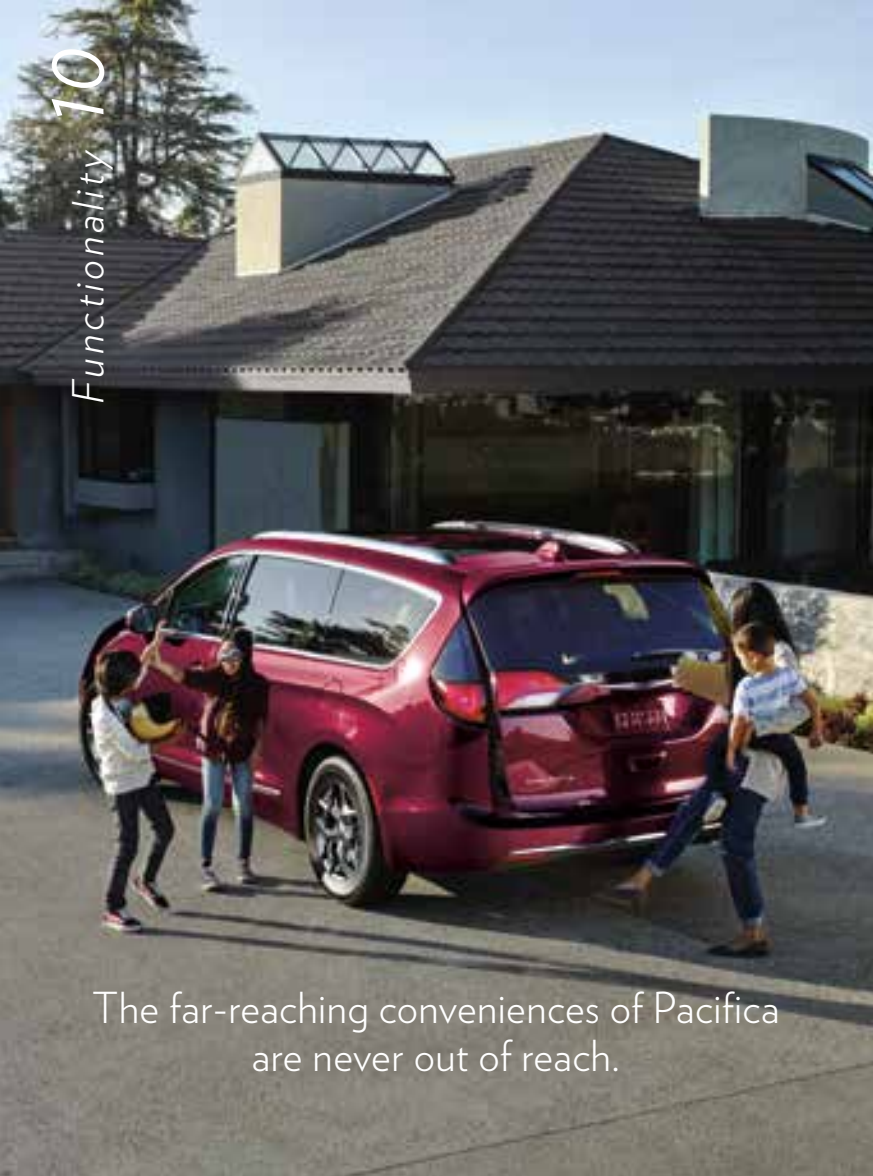
With the available class-exclusive¹ second-row Easy Tilt seating, passengers can easily climb in and out of the third row. At the simple pull of a lever, the second row seat smoothly shifts forward without having to push or pull it, even with an unoccupied child seat in place.

A platform for smooth utility.

Tuned and calibrated on rural roads, thoroughfares, highways and at validation facilities, the Pacifica is equipped to deliver the ride, feel and comfort of a premium vehicle. The precision-tuned handling allows for more aggressive driving characteristics, precise, responsive steering and best-in-class towing capacity.⁴



Real life rarely stays within the lines



The far-reaching conveniences of Pacifica are never out of reach.

Armloads are a given — hands-free entry is a gift.

Whether you're carrying shopping bags, a sleeping baby, or various other items to load on a daily basis, getting settled has never been smoother. With the available class-exclusive² hands-free sliding doors and hands-free liftgate, a simple foot kick opens up the vehicle while the key fob is with or near you.



Intuitive spaces.

Clever storage spots come in handy throughout the interior, including cup holders, map pockets, sliding drawers for tablets and more. The front row offers generous leg room along with a spot to place purses or larger items. The available center console and instrument-panel drawer allow you to easily reach items you don't want left out in the open, keeping your space organized and tidy.

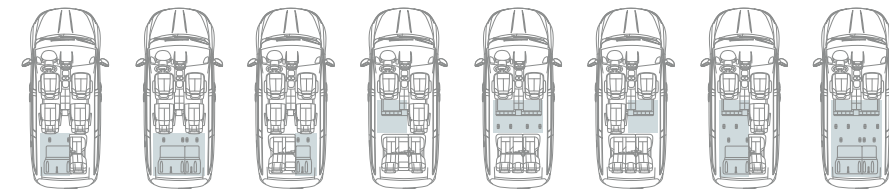
Easy cleanup with the available Stow 'n Vac vacuum.

The convenience of an available lightweight, built-in vacuum makes cleanup simple. The powerful, integrated vacuum by RIDGID® is stored near the second row of the driver's side for easy access. Stow 'n Vac includes a removable debris drawer for easy disposal, and a longer hose attachment allows an extended reach to every corner, nook and cranny of your Pacifica.



Look, no crumbs.

Generation us



Versatility 12

Utility at the top of its game.

The family room on wheels offers 243 different seating setups with the available seating for eight.* With seats stowed in the floor, an expansive flat cargo space will hold a large stack of 4' x 8' sheets of construction material. When seats are upright, in-floor bins provide storage organization.

Available seating for eight makes room to grow.

The available seating for eight* includes an easily removable³ center seat in the second row, adding an armrest, cup holder and bin when the seatback is folded down. The eighth seat increases the capacity of LATCH-installed child seats to five.



All precious cargo could use some divided attention

*Non-Hybrid models. Properly secure all cargo.

Personalize the information you see.

An available 7-inch full-color Driver Information Display (DID) delivers sharp, configurable graphics, seamlessly integrated with cluster gauges for a wide range of customizable settings, digital speedometer, fuel economy, active safety features and turn-by-turn navigation with instant access.

**Uconnect® touchscreen with available 4G Wi-Fi⁵**

Remain focused on the road with your hands on the wheel, while you communicate, navigate and stay entertained. Personalize your information and connectivity with available features like SiriusXM® Guardian⁶ and 4G Wi-Fi⁵ Hotspot, Siri® Eyes Free⁷ voice commands,⁸ Do Not Disturb to route incoming calls and texts, and the Drag and Drop menu bar to display your top Uconnect features and services.

SiriusXM Guardian⁶

SiriusXM Guardian,⁶ with a one-year trial subscription, helps you manage your busy lifestyle. Services include SOS Call,⁹ Roadside Assistance Call,¹⁰ Remote Vehicle Start,¹¹ Send & Go,¹² Stolen Vehicle Assistance¹³ and many more.

SiriusXM All Access¹⁴ Package

From coast-to-coast road trips to your daily commute, get over 160 channels to enjoy, as well as online streaming as part of your one-year trial. You have the ability to customize your music and listen to your favorite content on demand. SiriusXM Traffic¹⁴ and SiriusXM Travel Link¹⁴ are included on the available Uconnect 4C NAV with 8.4-inch Display radio with a five-year trial.


**android
auto**
Android Auto™¹⁵




Automatically provides a safer way to use Android devices while driving, sharing information while you easily access the best apps: Google Maps with voice-guided navigation and Google Play Music; place phone calls or send and receive messages⁸ and ask Google Search any question by voice command.⁸

**Apple CarPlay™¹⁶**

A smarter, safer way to use an iPhone® inside your vehicle and seamlessly integrate it with the Uconnect® touchscreen and Siri® voice control.⁷ You can make calls, access music, send and receive messages,⁸ get directions optimized for traffic conditions and more while staying focused on the road.

The technologically advanced family hub



Uconnect     

Available 4G Wi-Fi is the Pacifica's traveling hot spot.

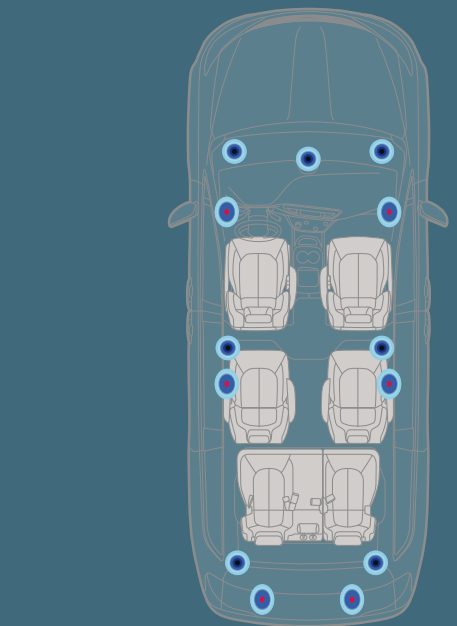
Securing the perfect location to get online is simple with Uconnect's available built-in hot spot that connects your Pacifica to fast, reliable Internet speed for up to eight devices and within 50 feet of your vehicle.

Uconnect® Theater

The available Uconnect Theater allows rear occupants to bring their lives along for the ride with dual HDMI inputs, headphone jacks, a Blu-ray® DVD player and a 115-volt outlet. A USB port in the first-row center stack can be used to play movies in the second row, while available ports in the first, second and third row also provide charging convenience. Nine built-in games and apps, as well as wireless streaming from Android devices, Bluetooth® touchpad remotes, and two 10-inch HD touchscreens, truly make this a mobile theater.

Active Noise Cancellation (ANC)

Contributing to the quietness of the cabin, the standard built-in ANC technology means engine and street noise are subdued through white-noise wavelengths. The Pacifica offers three levels of audio systems, which are equipped with six ANC microphones to enhance noise quality.



• Six (6) Active Noise Cancellation Components

Front and center performance with a backstage pass.

With the available Harman Kardon® premium audio system, every seat is perfectly tuned by sound specialists to immerse you in multichannel Surround Sound with up to 20 speakers in 13 locations — providing a life-like audio experience.

The most advanced entertainment system in its class²



The staycation that travels.

Appreciate leisure time anytime you can get it. The visually expansive Pacifica interior offers, with the available tri-pane panoramic sunroof, a power dual-pane, first- and second-row sunroof with third-row fixed overhead glass. The deep-tint glass and sunshades filter or block the sunlight as desired.

Built-in tranquility.

The sculpted shape of Pacifica offers advanced aerodynamics, while the enhanced low-sound exhaust and motor, laminated glass, Active Noise Cancellation technology and triple-seal doors contribute to making the Chrysler Pacifica peacefully quiet.



A sweet spot for handling stress.

The premium, ergonomically designed available heated and ventilated seats support contours of the body and provide generous leg room for ultimate comfort. The refined interior displays leather and cloth seating options with distinct stitching detail, as well as the standard Rotary E-shift dial and available open center console with storage. The available 12-way adjustable driver seat with four-way power lumbar support and memory settings, heated steering wheel and keyless entry with push-button start are part of the available comforts that make Pacifica built to appreciate the driver.



The best road-trip minivan in its class²



The mother of invention meets mother nature.

Eco-friendly living has evolved through nurture and nature; and driving farther while reducing your carbon footprint makes sense to the environmentally conscious, cost-efficient family. Pacifica Hybrid offers an astounding 84 MPGe¹⁸ without compromising the space and seating you need. With the automatic-transfer power of a 3.6L V6 gas engine and 16kWh battery, taking the scenic route is always the favored option.



America's first-ever Hybrid minivan¹⁷





A mission for reducing emissions.

Living an environmentally conscious lifestyle becomes second nature when you drive the Pacifica Hybrid. With a 33-mile electric driving range,¹⁸ the Hybrid is less dependent on gas, helping you to produce less emissions for a greener planet. It's about increasing your resources through the power of choice, and the gas pump isn't the only place you'll see savings. When you purchase a Pacifica Hybrid, you may qualify for up to a \$7,500 federal tax credit* — the full amount allowed thanks to the 16kWh battery. You may even qualify for additional state and local credits.

Electric + gas = powerful efficiency.

The Pacifica Hybrid offers the best of both worlds. Powered by an electric motor and gasoline engine, it automatically switches between electric power and hybrid power. Now it's simple to get the efficiency you are looking for with a surprisingly extensive 566-mile total driving range.¹⁸



Instinctively evolved design.

The distinctive Pacifica Hybrid exterior includes LED signature daytime running lamps (DRLs), wave-pattern grille design, teal accents and badging, as well as unique 17- and 18-inch wheels. The port located in the driver fender allows easy charging access after exiting the vehicle, while the capless fuel filler is placed on the same side at the rear of the vehicle for no-guesswork convenience.

Upgrade your garage with a Level II charger.

You have more important things to do than wait for your minivan to charge. Good thing the available 240-volt Mopar® charger¹⁹ (sold separately) lets you fully charge your Pacifica Hybrid in as little as two hours. Simply order the charger through your dealer and schedule an appointment for professional installation. It's that easy.

566-mile total driving range with 33-mile electric driving range¹⁸



*State and/or local incentives may also apply.



16kWh battery with the 3.6L Pentastar® V6 eHybrid engine.

The heart of the Pacifica Hybrid is the 16kWh lithium-ion battery, delivering up to 33 miles and 84 MPGe¹⁸ solely on zero-emissions electric power. It works seamlessly with a specially adapted version of the 3.6-liter V6 gasoline engine to deliver optimal efficiency. Additionally, every time you brake while driving, the Hybrid's regenerative braking system turns the motor into a generator, charging the battery to help extend the electric range.

Strong enough to power the vehicle for up to 33 miles¹⁸ on a single charge, the lithium-ion battery of the Pacifica Hybrid can be charged in as little as two hours with an available 240-volt Level II charger.¹⁹ The battery has a 10-Year/150,000-Mile Limited Warranty²¹ or a 10-Year/100,000-Mile Limited Warranty,²¹ depending on where the vehicle is purchased.



Ready-to-guide-you coaching tool.

If you're going to drive a hybrid, you want to optimize your fuel efficiency. The Pacifica Hybrid uses a small green light on the dash to tell you when you're driving efficiently. When you push performance beyond the eco-friendly range, the light turns yellow.

Uconnect® Hybrid Pages.

It's never been easier to be in tune with your ride. The Uconnect 4C with 8.4-inch Display lets you see your vehicle's performance — both hybrid and electric. Adjust your charging schedule to run during less expensive off-peak hours, view your power flow and more.

Remote access.

Stay connected to your Pacifica Hybrid from anywhere. View a driving history report, see your vehicle's charging progress, locate a charging station and more — all from the convenience of your phone within the Uconnect Access App.



America's first-ever Hybrid minivan with 84 MPGe²⁰



Pacifica Hybrid 26



Day-tripping on a single charge.

Extracurricular activities make for an active driving schedule during the normal course of any day. And when drop-offs and pick-ups are mapped by your local city streets, the 33-mile electric range¹⁸ fits well within capacity. A full charge of the Pacifica Hybrid covers lower-speed daily trips, such as errands, carpooling and shopping, without a charge at the gas pump. Stops at home offer a convenient time to recharge, as well as regenerative braking to keep the day moving along at perfect tempo.

One day, one charge — all the stops





Pacifica Hybrid 28

In harmony with its surroundings.

The symphony of interior hues, illumination and shapes complement exterior design cues to form the Hybrid signature style. The vivid Teal wing and leaf badging, charge light, Hybrid screens, available Ice Blue stitching and interior accents create a vibrant palette reflecting its environmental purpose from the inside out. The convenient five-point charging indicator, positioned on top of the dash, is visible at a glance, as well as from outside the vehicle to easily identify the battery's charge level from a distance.

Ready to drive.

Monitoring the Pacifica Hybrid energy output and input is so simple, you'll instantly know that it's ready to drive. The Pacifica Hybrid includes the standard Uconnect® 4C 8.4-inch touchscreen system with available navigation and Integrated Voice Command.⁹ In addition, the Hybrid Electric Pages provide helpful vehicle information screens for Power Flow, Driving History and Charge Scheduling.



Uncompromised versatility.

Without compromising space for efficiency, the Pacifica Hybrid delivers seating for seven, a fold-in-floor third-row seat and all the flat cargo space of the standard Pacifica minivan. This uncompromised utility also comes complete with the versatility to remove³ the second-row seats, allowing you to change to up to 81 configurations as needed.



The most technologically advanced 7-passenger Hybrid²

Image is for illustration purposes only and may not reflect exact software for your vehicle.

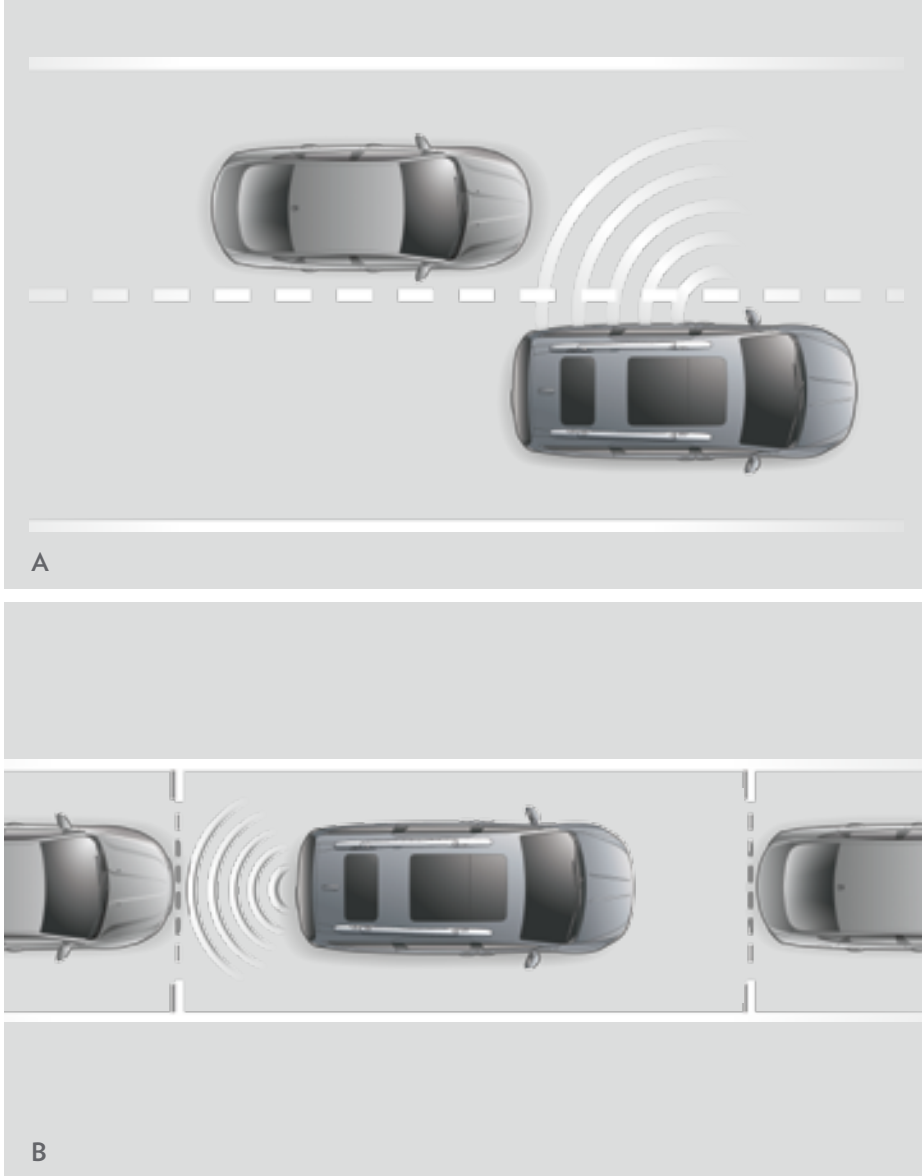
Properly secure all cargo.

SafetyTec™ Group
Standard on every Pacifica.

Blind Spot Monitoring²² [A] — Sees where you can't. This available system continuously monitors rear blind zones on either side of your vehicle via radar and, if a vehicle is sensed in the zones, will notify you via a yellow triangle symbol on the outside rearview mirror.

Available Rear Cross-Path Detection²³ monitors for vehicles/objects in perpendicular relationships to the vehicle when maneuvering backward in parking lots, and provides feedback to you by audible chimes and/or visual icons.

ParkSense® Rear Park Assist with Stop²³ [B] Parking close to other vehicles or objects is made easy with sensors positioned on the rear bumper. Park-Sense Rear Park Assist with Active Braking can automatically apply the brakes to prevent a potential collision, or contact with a vehicle behind yours in low-speed parking situations. The system alerts you with a chime if your vehicle is too close to another vehicle or object, such as a building, bike, parking meter or lot barrier, as well as provides a visual reference in the Driver Information Display for further convenience.



Available Advanced SafetyTec™ Group

360° Surround-View Camera²³ [C]

Whether parking, changing lanes, or simply backing out of your driveway, the available full-surround camera views²³ — with visual and audio alerts — provide a display of your vehicle surroundings in the Uconnect® touchscreen.

Full-Speed Forward Collision Warning with Active Braking²⁴ [D]

This available system reduces speed to prevent a potential impact. Radar and video sensors detect if the vehicle is approaching another vehicle or large obstacle in its path too rapidly, warning and assisting the driver.

Adaptive Cruise Control (ACC) with Stop²⁵ [E]

This available system uses sensors to help maintain a safe distance from vehicles in your forward path. This system initiates braking to manage speeds down to zero mph with four selectable distance settings.

LaneSense® Lane Departure Warning with Lane Keep Assist²⁶ [F]

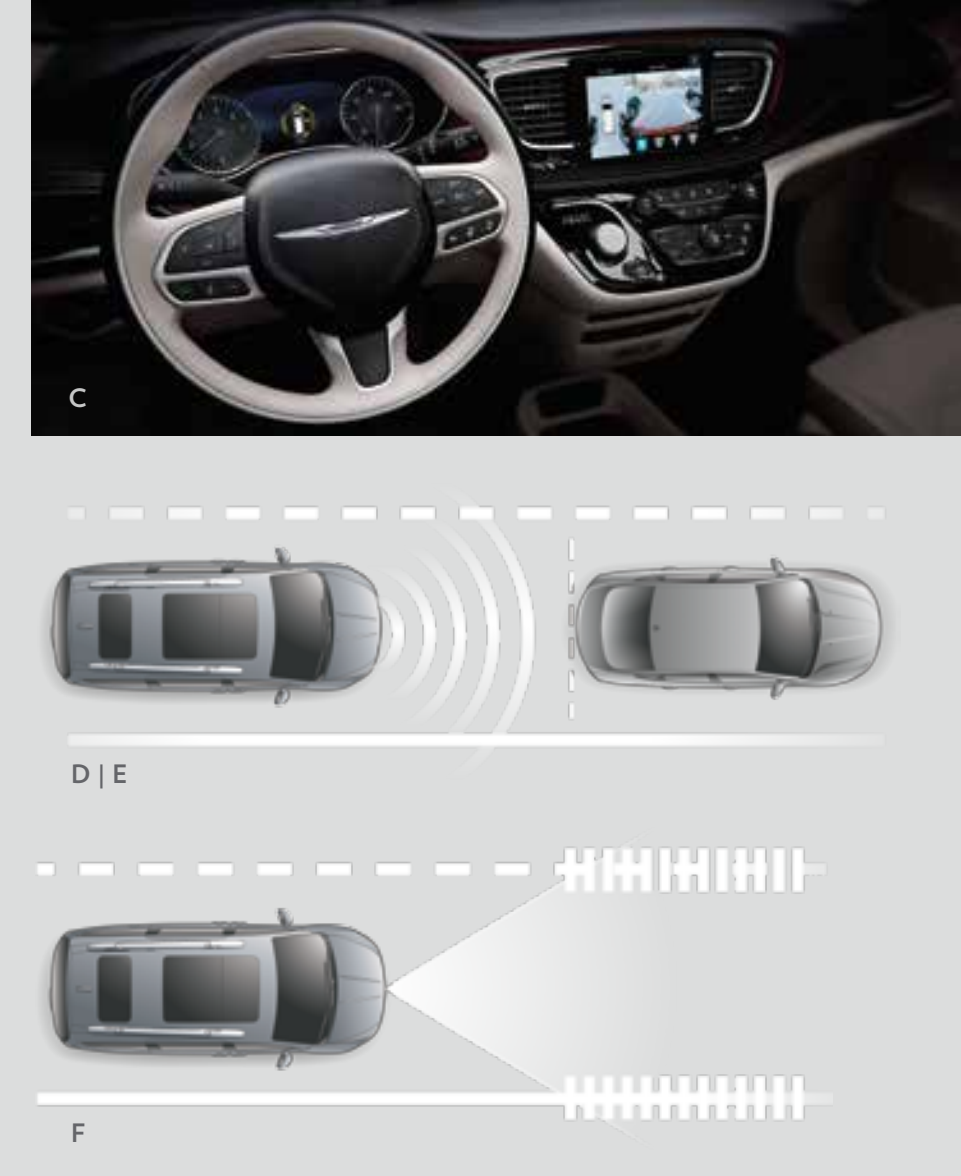
With a forward-mounted camera, this available system identifies lane lines to determine your vehicle position. If you drive on or outside of the lane lines without using a turn signal, a warning is displayed in the cluster and aligns the vehicle to its correct lane position if the driver does not correct the drift.

ParkSense^{®23} Front Park Assist

The available system uses sensors on the front fascia when driving at low speeds to detect objects. It will alert you with a chime and a visual warning in the cluster display if you are too close to another vehicle or object.

Parallel and Perpendicular Park Assist²³

When activated by the driver, this available system helps to maneuver the vehicle into a perpendicular or parallel parking space by automatically controlling steering-wheel turn as the driver controls the gears, brake and accelerator.



The 2017 IIHS Top Safety Pick+ applies to non-Hybrid vehicles equipped with optional front crash prevention and specific headlights, and built after August 2016.

100+ standard and available safety and security features



Structural integrity.

The upper body and frame of the Pacifica unibody structure are engineered as a single unit, bringing a superior foundation for achieving premium sedan-like agility. This architecture carries exceptionally solid strength, advanced structural applications, optimized proportions and dynamic qualities like the use of an enhanced grade of high-strength steels. The door design also increases visibility around the front windows and pillars while sound-absorbing barriers throughout the body and engine area reduce overall cabin noise, contributing to less driver distraction.

The Pacifica utilizes approximately 65% high-strength steel for maximizing stiffness and strength — for vehicle dynamics and crash performance — while optimizing weight efficiency. That means you'll always feel well-protected inside.



Your family's safety and security are what matter most

PACIFICA / PACIFICA HYBRID EXTERIOR COLORS



Billet Silver Metallic



Ocean Blue Metallic*



Bright White



Copper Pearl Coat*



Dark Cordovan Pearl Coat



Brilliant Black Crystal Pearl Coat



Velvet Red Pearl Coat



Molten Silver



Granite Crystal Metallic



Jazz Blue Pearl Coat

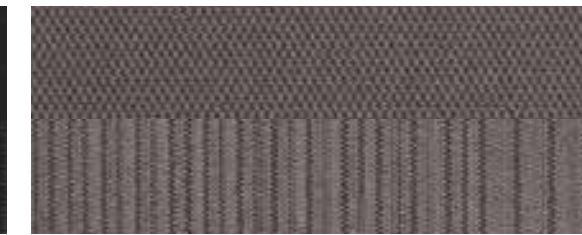
PACIFICA / PACIFICA HYBRID INTERIOR MATERIALS



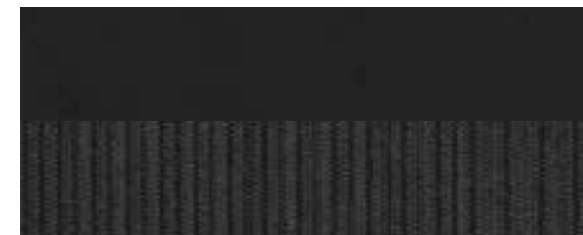
Alloy Cloth/Rain Forest Print and Ice Blue stitching — Standard on Hybrid Touring Plus



Black Cloth with Black Ravine — Standard on L, LX and Touring Plus



Toffee Cloth with Toffee Ravine — Standard on L, LX and Touring Plus



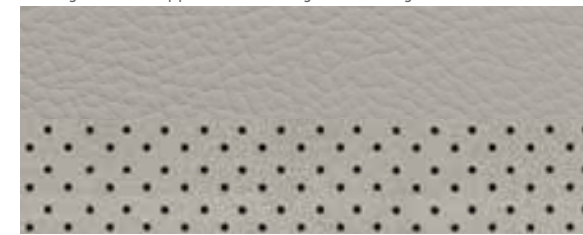
Black Cloth/Black Ravine with Light Diesel Gray embroidered S logo stitching — Packaged with S Appearance Package on Touring Plus



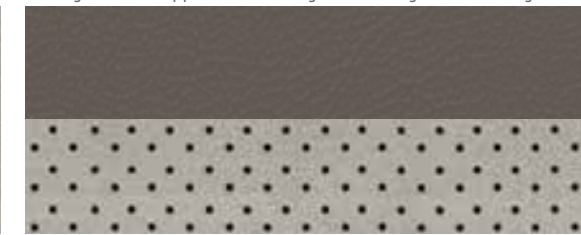
Black McKinley Leather/Axis Perforations with Light Diesel Gray embroidered S logo stitching — Packaged with S Appearance Package on Touring L and Touring L Plus



Black McKinley Leather with Axis Perforations — Standard on Touring L, Hybrid Touring L and Touring L Plus



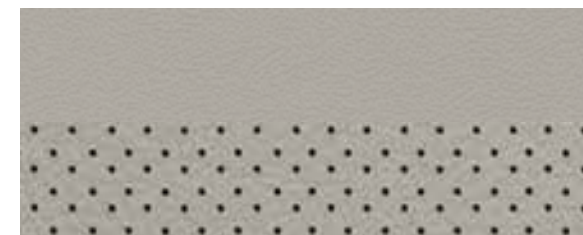
Alloy McKinley Leather with Axis Perforations — Standard on Hybrid Touring L, Optional on Touring L and Touring L Plus



Alloy/Toffee Two-tone McKinley Leather with Axis Perforations — Standard on Touring L and Touring L Plus



Black Nappa Leather with Axis II Perforations — Standard on Limited and Hybrid Limited



Alloy Nappa Leather with Axis II Perforations — Standard on Limited and Hybrid Limited



Deep Mocha Nappa Leather with Axis II Perforations — Standard on Limited and Hybrid Limited



Black Nappa Leather/Axis II Perforations with Light Diesel Gray embroidered S logo stitching — Packaged with S Appearance Package on Limited

*Restrictions apply, see dealer for details.

Authentic Chrysler Accessories.

The 2018 Chrysler Pacifica embodies family utility and sleek, sporty style. A wide range of Authentic Mopar Accessories, crafted specifically for the versatile ingenuity of the modern Pacifica, lets you take your family's active lifestyle even further. From Sport and Cargo Carriers to Premium Protection Parts, Mopar helps the crew and all its gear go the distance. Visit your local Chrysler dealership to see the full line of Authentic Accessories for the exciting Chrysler Pacifica.

Vehicle shown with available Removable³ Roof Rack Kit,⁴ Roof-Mount Surf and Paddle Board Carrier.¹

mopar.com



¹Properly secure all cargo.



PACIFICA L

Select standard equipment for L

powertrain

3.6L Pentastar® Variable Valve Timing (VVT) V6
9-speed Automatic Transmission

6 Speakers

60/40 3rd row with Stow 'n Go®

7-passenger Seating

Active Noise Cancellation (ANC)

Capless Fuel Fill

Cruise Control

Deluxe 2nd-row Bench Seat

Driver and Front-passenger

Air Conditioning

Keyless Enter 'n Go™

ParkView® Rear Back-Up Camera²³

Power Front Windows with Driver's

Side One-touch and Power

2nd-row Windows

Power Locks

Remote Keyless Entry

Sunscreen Glass

Tilt/Telescoping Steering Wheel

Uconnect® 4 with 7-inch Display

Apple CarPlay™¹⁶

Android Auto™¹⁵

SafetyTec™ Group

Blind Spot Monitoring²²

Rear Cross-Path Detection²³

ParkSense® Rear Park Assist with Stop²³



PACIFICA LX

Select standard equipment over L

powertrain

3.6L Pentastar VVT V6 with Engine Stop/Start (ESS) 9-speed Automatic Transmission

Active Grille Shutters

Auto Advance 'n Return (for driver side)

Stow 'n Go Seating (2nd and 3rd rows)

Three-zone Manual Climate Control



PACIFICA TOURING PLUS

Select standard equipment over LX

powertrain

3.6L Pentastar VVT V6 with ESS 9-speed Automatic Transmission

2nd-row Window Shades

Additional Charge-only First-row USB Port

Automatic Headlamps

Bright Door Handles

Interior Door Handle LED Lamps

LED Taillamps

Power Liftgate

Power Sliding Doors

Premium Fog Lamps

Rear Reading Courtesy Lamps

Remote Proximity Entry on All Doors

Three-zone Automatic Climate Control

Uconnect 4 with 7-inch Display with SiriusXM®

Satellite Radio¹⁴

Universal Garage Door Opener²⁷

Remote Start System

Security Alarm



PACIFICA TOURING L

Select standard equipment over Touring Plus

powertrain
3.6L Pentastar® Variable Valve Timing (VVT) V6 with Engine Stop/Start (ESS) 9-speed Automatic Transmission

2nd- and 3rd-Row Window Shades
Bright Bodyside Moldings
Grocery Bag Hooks on 3rd-row Seatbacks
Leather-trimmed Perforated Seating
Stow 'n Place® Bright Side Roof Rails with Integrated Crossbars
Heated front row seats

WHEELS



17-inch Steel Wheel with Full Cover
Standard on Pacifica L (W7C/WFU)



17-inch Cast-Aluminum Wheel Fully Painted Tech Silver
Standard on LX (WFN)



17-inch Cast-Aluminum Wheel Fully Painted Tech Silver
Standard on Touring Plus, Touring L and Touring L Plus; Optional on LX (WFS)



17-inch Cast-Aluminum Wheel Fully Painted Tech Silver
Standard on Hybrid Touring Plus and Hybrid Touring L (WGZ)



17-inch Cast-Aluminum Wheel Fully Painted Tech Silver
Standard on Hybrid Limited Optional on Hybrid Touring L (WAE)



PACIFICA TOURING L PLUS

Select standard equipment over Touring L

powertrain
3.6L Pentastar VVT V6 with ESS 9-speed Automatic Transmission

7-inch Driver Information Display (DID)
13 Alpine® Speakers
Acoustic Windshield
Auto-dimming Rearview Mirror
Heated 2nd-row Seats
Heated Steering Wheel
Super Console
Uconnect® 4C NAV with 8.4-inch Display
Uconnect Theater with Wireless Streaming



PACIFICA LIMITED

Select standard equipment over Touring L Plus

powertrain
3.6L Pentastar VVT V6 with ESS 9-speed Automatic Transmission

2nd-row USB Charge Ports
Auto-dimming Exterior Driver-side Mirror
Chrome Exterior Mirrors
Hands-free Sliding Doors and Liftgate
High Intensity Discharge (HID) Headlamps
LED Fog Lamps
Power Folding 3rd-row Seat
Premium Leather-trimmed Seats
Stow 'n Vac
Tri-Pane Panoramic Sunroof
Ventilated Front Seats with Memory



PACIFICA HYBRID TOURING PLUS

Select standard equipment for Hybrid Touring Plus

powertrain
3.6L Atkinson Cycle V6 Hybrid Engine with Electrically Variable Transmission (EVT)
16kWh Battery

6 Speakers
60/40 3rd row with Stow 'n Go®
7-inch Driver Information Display (DID) with Unique Hybrid Screens
7-passenger Seating
Active Grille Shutters
Active Noise Cancellation (ANC)
Battery Charge Indicator
Capless Fuel Fill
Cruise Control



18-inch Cast-Aluminum Wheel Fully Painted Satin Silver
Optional on Touring Plus, Touring L and Touring L Plus (WPR)



18-inch Cast-Aluminum Wheel Fully Polished
Standard on Limited (WPD)



18-inch Cast-Aluminum Wheel Polished Face with Tech Gray Painted Pockets
Optional on Hybrid Limited (WPU)



18-inch Cast-Aluminum Wheel with Black Noise Finish
Packaged with S Appearance Package (WHG)



20-inch Cast-Aluminum Wheel Polished Face with Tech Gray Painted Pockets
Optional on Limited (WPA)



20-inch Cast-Aluminum Wheel with Black Noise Finish
Optional with S Appearance Package (WRE)



PACIFICA HYBRID TOURING L

Select standard equipment over Hybrid Touring Plus

powertrain
3.6L Atkinson Cycle V6 Hybrid Engine with EVT
16kWh Battery

2nd- and 3rd-row Window Shades
Blind Spot Monitoring²²
Rear Cross-Path Detection²³
Bright Bodyside Moldings
Grocery Bag Hooks on 3rd-row Seatbacks
Heated Front Seats
Leather-trimmed Perforated Seating
Power Liftgate
Remote Start System¹¹
Stow 'n Place® Bright Side Roof Rails with Integrated Crossbars
Universal Garage Door Opener²⁷



PACIFICA HYBRID LIMITED

Select standard equipment over Hybrid Touring L

powertrain
3.6L Atkinson Cycle V6 Hybrid Engine with EVT
16kWh Battery

2nd-row USB Charge Ports
Auto-dimming Rearview Mirror
Chrome Exterior Mirrors
Hands-free Sliding Doors and Liftgate
Premium Leather-trimmed Seats
Super Console
Uconnect 4C NAV with 8.4-inch Display
Ventilated Front Seats
Uconnect Theater with Wireless Streaming
Advanced SafetyTec Group
20-Speaker Harman Kardon® Sound Group

Easy Entry Slide 2nd-row Seating
Hybrid Plug-in Charging Port with 120-volt Cord
Keyless Enter 'n Go™
ParkView® Rear Back-Up Camera²³
Power Locks
Power Sliding Doors
Remote Keyless Entry
Sunscreen Glass
Three-zone Automatic Climate Control
Tilt/Telescoping Steering Wheel
Uconnect® 4C with 8.4-inch Display
Apple CarPlay™¹⁶
Android Auto™¹⁵
SafetyTec™ Group
Blind Spot Monitoring²²
Rear Cross-Path Detection²³
ParkSense® Rear Park Assist with Stop²³

2018 CHRYSLER PACIFICA

| | Pacifica L | Pacifica LX | Pacifica Touring Plus | Pacifica Touring L | Pacifica Touring L Plus | Pacifica Limited | Pacifica Hybrid Touring Plus | Pacifica Hybrid Touring L | Pacifica Hybrid Limited |
|--|------------|-------------|-----------------------|--------------------|-------------------------|------------------|------------------------------|---------------------------|-------------------------|
| ENGINE AND TRANSMISSION | | | | | | | | | |
| 3.6L Pentastar® Variable Valve Timing (VVT) V6 with 9-speed automatic transmission | * | | | | | | | | |
| 3.6L Pentastar VVT V6 with Engine Stop/Start (ESS) and 9-speed automatic transmission | | * | * | * | * | * | | | |
| 3.6L Atkinson Cycle V6 Hybrid engine with Electrically Variable Transmission (EVT) | | | | | | | * | * | * |
| MECHANICAL FEATURES | | | | | | | | | |
| 6.6kW Battery Charger with Cord | | | | | | | * | * | * |
| Alternator — 160-amp | * | | | | | | | | |
| — 180-amp | | * | * | * | | * | | | |
| — 220-amp (included with Uconnect Theater with Wireless Streaming Package and Trailer Tow Group) | | | P | P | * | P | | | |
| Battery — 650-amp maintenance-free (packaged with ESS configuration) | | * | * | * | * | * | * | * | * |
| — Auxiliary (packaged with ESS configuration) | | * | * | * | * | * | | | |
| — 730-amp, maintenance-free | * | * | * | * | * | * | | | |
| — Battery charge indicator | | | | | | | * | * | * |
| Brakes — 4-wheel antilock disc Regenerative | | | | | | | * | * | * |
| — 4-wheel antilock with discs | * | * | * | * | * | * | | | |
| Defroster — Rear | * | * | * | * | * | * | * | * | * |
| Engine Block Heater | ○ | ○ | ○ | ○ | ○ | ○ | | | |
| Fuel Tank — 16.5-gallon | | | | | | | * | * | * |
| — 19-gallon | * | * | * | * | * | * | | | |
| Suspension — Heavy-duty | | | | | | | * | * | * |
| — Normal-duty | * | | | | | | | | |
| — Touring-tuned | | * | * | * | * | * | | | |
| Tip Start — Quiet start, prevents double starts | * | * | * | * | * | * | * | * | * |
| EXTERIOR FEATURES | | | | | | | | | |
| Door Handles — Black | * | | | | | | | | |
| — Body-color (included with S Appearance Package) | | * | P | P | P | P | | | |
| — Bright (not available with S Appearance Package) | | * | * | * | * | * | * | * | * |
| Doors — Power sliding | | | * | * | * | * | * | * | * |
| — Hands-free sliding doors and liftgate | | | | | ○ | * | | * | |
| Fog Lamps — LED | | | | | | * | | | |
| — Premium | | | * | * | * | * | * | * | * |
| Glass — Sunscreen | * | * | * | * | * | * | * | * | * |
| Grille — Black | * | * | | | | | | | |
| — Black with bright surround | | | | | | | * | * | * |
| — Black upper | | | * | * | * | * | | | |
| — Black Chrysler wing badge (included with S Appearance Package) | | | P | P | P | P | | | |
| Headlamps — Auto High-Beam Headlamp Control (included with Advanced SafetyTec™ Group) | | | | P | P | P | | | * |
| — Automatic | | | * | * | * | * | * | * | * |
| — Dual High Intensity Discharge (HID) | | | | | | * | | | |

| | Pacifica L | Pacifica LX | Pacifica Touring Plus | Pacifica Touring L | Pacifica Touring L Plus | Pacifica Limited | Pacifica Hybrid Touring Plus | Pacifica Hybrid Touring L | Pacifica Hybrid Limited |
|---|------------|-------------|-----------------------|--------------------|-------------------------|------------------|------------------------------|---------------------------|-------------------------|
| EXTERIOR FEATURES (continued) | | | | | | | | | |
| — Quad-halogen | * | * | * | * | * | | * | * | * |
| Liftgate — Power | | | * | * | * | | ○ | * | * |
| Mirrors — Foldaway, power, heated body-color | * | * | | | | | | | |
| — Foldaway, power, heated body-color | | | * | * | * | | * | * | |
| — Foldaway, power, heated with chrome exterior with supplemental turn indicator | | | | | | | | * | |
| — Power folding, power, heated with chrome exterior, memory feature, auto-dimming, driver side, courtesy lamps, supplemental turn indicator, auto-adjust-in-Reverse | | | | | | * | | | |
| Molding — Bodyside, bright (not available with S Appearance Package) | | | | * | * | * | | * | * |
| Roof Rack — Stow 'n Place® Black (packaged with S Appearance Package) | | | O/P | P | P | P | | | |
| — Stow 'n Place with bright side rails (not available with S Appearance Package) | | | | * | * | * | | * | * |
| Sill Appliqué — Body-color | * | * | * | * | * | * | * | * | * |
| Tires — 235/65R17 BSW All-Season | * | * | * | * | * | * | * | * | * |
| — 235/60R18 BSW All-Season | | | ○ | ○ | ○ | * | | | ○ |
| — 245/50R20 BSW All-Season (optional only with S Appearance Package) | | | ○ | ○ | ○ | ○ | | | |
| — Tire Service Kit | * | * | * | * | * | * | * | * | * |
| — Inflatable spare tire kit | | | ○ | ○ | | | | | |
| — Inflatable spare tire kit with sealant (packaged with vacuum delete on Limited) | | | | | ○ | P | | | |
| Tri-Pane Panoramic Sunroof — Power (not available with 8-Passenger Seating and 20-inch Wheels Group on Limited) | | | | | ○ | * | | | ○ |
| Wheels — 17-inch steel with covers | * | | | | | | | | |
| — 17-inch aluminum | | * | | | | | | | |
| — 17-inch aluminum | | ○ | * | * | * | | | | |
| — 17-inch aluminum | | | | | | | * | * | |
| — 17-inch aluminum | | | | | | | | ○ | * |
| — 18-inch aluminum | | | ○ | ○ | ○ | | | | |
| — 18-inch polished aluminum | | | | | | * | | | |
| — 18-inch polished aluminum | | | | | | | | | ○ |
| — 18-inch aluminum Black Noise (included with S Appearance Package) | | | P | P | P | P | | | |
| — 20-inch aluminum (packaged with 8-Passenger Seating and 20-inch Wheels Group) | | | | | | | P | | |
| — 20-inch aluminum Black Noise (optional only with S Appearance Package) | | | ○ | ○ | ○ | ○ | | | |
| Windshield Wipers — Front, rain-sensing (included with Advanced SafetyTec Group) | | | | P | P | P | | | * |
| — Front, variable/intermittent | * | * | * | * | * | * | * | * | * |
| — Rear wiper/washer | * | * | * | * | * | * | * | * | * |
| INTERIOR FEATURES | | | | | | | | | |
| Air Conditioning — Three-Zone Automatic Temperature Control | | | * | * | * | * | * | * | * |
| — Three-Zone Manual Temperature Control | ○ | * | | | | | | | |
| — Driver and Front-Passenger Manual Temperature Control | * | | | | | | | | |
| Door Locks — Power | * | * | * | * | * | * | * | * | * |
| Grocery Bag Hooks — On 3rd-row seatbacks | | | * | * | * | | * | * | * |

| | Pacifica L | Pacifica LX | Pacifica Touring Plus | Pacifica Touring L | Pacifica Touring L Plus | Pacifica Limited | Pacifica Hybrid Touring Plus | Pacifica Hybrid Touring L | Pacifica Hybrid Limited |
|---|------------|-------------|-----------------------|--------------------|-------------------------|------------------|------------------------------|---------------------------|-------------------------|
| INTERIOR FEATURES (continued) | | | | | | | | | |
| Lighting — Map/dome reading lamps switchable | * | | | | | | | | |
| — Front and rear LED lamps | | * | * | * | * | * | * | * | * |
| — Cargo compartment lamp | | * | * | * | * | * | * | * | * |
| — Footwell courtesy lamp | | | | | | * | | | |
| — Interior door handle LED lamps | | | * | * | * | * | * | * | * |
| — Front, courtesy lamp | | * | * | * | * | * | * | * | * |
| — Glove box lamp | | | * | * | * | * | | | |
| — Liftgate, single floodlamp | | | * | * | * | * | | | |
| — Overhead, ambient surround | | * | * | * | * | * | * | * | * |
| — Rear reading/courtesy lamps | | | * | * | * | * | * | * | * |
| — Rear ambient lighting | | | | | * | * | | | |
| — Right and left front door searchlights | | | | | | * | | | |
| — Illuminated map pocket and puddle lamp | | | | | | * | | | |
| Mirrors — Auto-dimming rearview | | | | | * | * | | | * |
| — Illuminated visor vanity | * | * | * | * | * | * | * | * | * |
| — Rearview day/night | * | * | * | * | * | * | * | * | * |
| Power Outlets — Auxiliary, 12-volt in instrument panel | * | * | * | * | * | * | * | * | * |
| — Auxiliary, 115-volt (included with Uconnect® Theater with Wireless Streaming Package) | | | | | * | P | | | P |
| Remote Start System ¹¹ | | | * | * | * | * | * | * | * |
| Shades — Second- and 3rd-row retractable | | | | * | * | * | * | * | * |
| Speed Control (not available with Adaptive Cruise Control (ACC) ²⁵) | * | * | * | * | * | * | * | * | * |
| — ACC ²⁵ with Stop and Go (included with Advanced SafetyTec™ Group) | | | | | P | P | P | * | * |
| Steering Column — Tilt/telescoping | * | * | * | * | * | * | * | * | * |
| Steering Wheel — Heated | | | | | * | * | * | * | * |
| — Luxury | | | | | | * | | | * |
| — Mounted audio controls | | * | * | * | * | * | * | * | * |
| — Urethane | * | * | * | * | * | * | * | * | * |
| — Leather-wrapped (packaged with S Appearance Package on Touring Plus) | | | P | * | * | | * | | * |
| Storage — Floor tray | * | * | * | * | * | * | * | * | * |
| — Floor console | * | * | | | | | * | | |
| — Full-length upgraded floor console | | | * | * | | | * | | * |
| — Super Console — Includes illuminated cup holders on non-Hybrid models | | | | | | * | | | * |
| — Glove box, locking | * | * | * | * | * | * | * | * | * |
| — Lower instrument-panel cubby | * | * | * | * | * | * | * | * | * |
| Stow 'n Vac integrated vacuum cleaner | | | | | | * | | | |
| — Vacuum delete (includes inflatable spare tire) | | | | | | ○ | | | |
| Trip Computer — Electronic Vehicle Information Center (EVIC) with display in instrument cluster, controls mounted on steering wheel | * | * | * | * | * | * | * | * | * |
| Universal Garage Door Opener ²⁷ — Programmable, three-function | | | * | * | * | * | * | * | * |

| | Pacifica L | Pacifica LX | Pacifica Touring Plus | Pacifica Touring L | Pacifica Touring L Plus | Pacifica Limited | Pacifica Hybrid Touring Plus | Pacifica Hybrid Touring L | Pacifica Hybrid Limited |
|--|------------|-------------|-----------------------|--------------------|-------------------------|------------------|------------------------------|---------------------------|-------------------------|
| INTERIOR FEATURES (continued) | | | | | | | | | |
| Windows — Front, power with driver's 1-touch up/down, front-passenger 1-touch down (front 1-touch included with SafetyTec on Pacifica L model) | P | * | * | * | | | * | * | * |
| — Power front with driver 1-touch | * | | | | | | | | |
| — Power front and rear 1-touch up/down | | | | | | * | * | | |
| — Power 2nd-row | * | * | * | * | * | * | * | * | * |
| SEATING AND TRIM | | | | | | | | | |
| Seats — Driver's 4-way power lumbar support (included with power driver's seat) | | * | * | * | * | * | * | * | * |
| — 6-way manual driver | * | | | | | | | | |
| — 8-way power driver (with memory on Limited non-Hybrid only) | | * | * | * | * | * | * | * | * |
| — 8-way power front-passenger (includes Auto Advance 'n Return on passenger side on non-Hybrid) | | | | ○ | * | * | | * | * |
| — Heated 2nd-row | | | | | * | * | | | |
| — Heated front | | | | * | * | * | | * | * |
| — Premium cloth | * | * | * | | | | * | | |
| — Perforated leather trim | | | | * | * | | | * | |
| — Premium leather-trimmed | | | | | | * | | | * |
| — Perforated leather trim (packaged with S Appearance Package) | | | | P | P | | | | |
| — Cloth with S logo (packaged with S Appearance Package) | | | P | | | | | | |
| — Nappa leather trim (packaged with S Appearance Package) | | | | | | P | | | |
| — 2nd-row deluxe bench seats with 3rd-row Stow 'n Go® | * | | | | | | | | |
| — 2nd-row Stow 'n Go bucket seats that fold in the floor and include 2nd-row in-floor storage bins | | * | * | * | * | * | | | |
| — Easy entry slide 2nd-row | | | | | | | * | * | * |
| — Auto Advance 'n Return driver's side | | * | * | * | * | * | | | |
| — Auto Advance 'n Return passenger side (packaged with 8-way power passenger seat on Touring L) | | | | P | * | * | | | |
| — 3rd-row power folding Stow 'n Go 60/40 bench seats that fold in the floor | | | | | | * | | | |
| — 3rd-row Stow 'n Go 60/40 bench seats that fold in the floor | * | * | * | * | * | * | * | * | * |
| — 8-passenger seating (packaged with 20-inch wheels on Limited) | | ○ | ○ | ○ | ○ | P | | | |
| — Ventilated front seats | | | | | | * | | | * |
| UCONNECT | | | | | | | | | |
| SiriusXM® Satellite Radio ¹⁴ | | | * | * | * | * | * | * | * |
| SiriusXM Guardian ^{®6} (packaged with Uconnect 4C NAV) | | | | | | * | * | P | * |
| Sound Systems — Harman Kardon® 20 speakers (included with 20-Speaker Harman Kardon Sound Group and Uconnect Theater with Wireless Streaming Package) | | | | | | P | P | | * |
| — Alpine® 13 speakers (included with Premium Audio Group) | | | | P | * | * | | | |
| — 6 speakers | * | * | * | * | | | * | * | |
| Uconnect 4 with 7-inch Display — Includes 7-inch touchscreen, AM/FM, AUX/USB, Integrated Voice Command [®] with Bluetooth®, Voice Text Reply ^{2®} , Android Auto ^{™15} and Apple CarPlay ^{™16} | * | * | * | * | | | | | |

* = Included. P = Available within Package noted. ○ = Optional.

| | Pacifica L | Pacifica LX | Pacifica Touring Plus | Pacifica Touring L | Pacifica Touring L Plus | Pacifica Limited | Pacifica Hybrid Touring Plus | Pacifica Hybrid Touring L | Pacifica Hybrid Limited |
|--|------------|-------------|-----------------------|--------------------|-------------------------|------------------|------------------------------|---------------------------|-------------------------|
| UCONNECT® (continued) | | | | | | | | | |
| Uconnect 4C with 8.4-inch Display — Includes 8.4-inch touchscreen, AM/FM, AUX/USB, Integrated Voice Command ⁸ with Bluetooth [®] Voice Text Reply ²⁸ Android Auto ^{TM15} Apple CarPlay ^{TM16} and HD radio (packaged with Premium Audio Group) | | | | P | | | • | • | |
| Uconnect 4C NAV with 8.4-inch Display — Includes 8.4-inch touchscreen, AM/FM, AUX/USB, Integrated Voice Command ⁸ with Bluetooth, Voice Text Reply ²⁸ Android Auto ¹⁵ Apple CarPlay ¹⁶ HD radio, Navigation, SiriusXM [®] Traffic ¹⁴ and SiriusXM Travel Link ⁴ | | | | | • | • | ○ | | • |
| Single rear overhead DVD player | | ○ | ○ | ○ | | | ○ | ○ | |
| Integrated Voice Command ⁸ — Hands-free ⁸ communication system | • | • | • | • | • | • | • | • | • |
| SAFETY & SECURITY | | | | | | | | | |
| Air Bags ²⁹ — Advanced multistage driver and front-passenger, includes low-risk deployment | • | • | • | • | • | • | • | • | • |
| — Driver's and front-passenger side inflatable knee blocker ²⁹ | • | • | • | • | • | • | • | • | • |
| — Front-seat-mounted side | • | • | • | • | • | • | • | • | • |
| — Side-curtain, for outboard passengers in all 3 rows | • | • | • | • | • | • | • | • | • |
| Blind Spot Monitoring (BSM) ²² with Rear Cross-Path Detection System ²³ | • | • | • | • | • | • | • | • | • |
| Child Seat Anchor System (LATCH) | • | • | • | • | • | • | • | • | • |
| Electric Parking Brake with Safe Hold | • | • | • | • | • | • | • | • | • |
| Electronic Stability Control (ESC) ³⁰ | • | • | • | • | • | • | • | • | • |
| Forward Collision Warning Plus (FCW+) ²⁴ (packaged with Advanced SafetyTec™ Group) | | | | P | P | P | | | • |
| KeySense | ○ | ○ | ○ | ○ | ○ | ○ | ○ | ○ | ○ |
| LaneSense® Lane Departure Warning Plus (LDW+) ²⁶ (packaged with Advanced SafetyTec Group) | | | | P | P | P | | | • |
| Parallel and Perpendicular Park Assist ²³ (packaged with Advanced SafetyTec Group) | | | | P | P | P | | | • |
| ParkSense® Front and Rear Park Assist with Stop ²³ (packaged with Advanced SafetyTec Group) | | | | P | P | P | | | • |
| ParkSense Rear Park Assist System with Stop ²³ — Assists while parking (not available with Parallel and Perpendicular Park Assist ²³) | • | • | • | • | • | • | • | • | • |
| ParkView® Rear Back-Up Camera ²³ (not available with Surround-View Camera ²³) | • | • | • | • | • | • | • | • | • |
| Remote Keyless/Illuminated Entry System | • | • | • | • | • | • | • | • | • |
| Remote Proximity — All doors (packaged with power sliding doors on Pacifica LX model) | | P | • | • | • | • | • | • | • |
| Security Alarm | | | • | • | • | • | • | • | • |
| Surround-View Camera ²³ (packaged with Advanced SafetyTec Group) | | | | P | P | P | | | • |



| | Pacifica L | Pacifica LX | Pacifica Touring Plus | Pacifica Touring L | Pacifica Touring L Plus | Pacifica Limited | Pacifica Hybrid Touring Plus | Pacifica Hybrid Touring L | Pacifica Hybrid Limited |
|--|------------|-------------|-----------------------|--------------------|-------------------------|------------------|------------------------------|---------------------------|-------------------------|
| SAFETY & SECURITY (continued) | | | | | | | | | |
| Tire Pressure Monitoring System | • | • | • | • | • | • | • | • | • |
| Trailer Sway Control (TSC) ³⁰ (packaged with Trailer Tow Group) | | | P | P | P | P | | | |
| Emergency Kit Group — Includes Travel and Safety Kit and first aid kit | ○ | ○ | ○ | ○ | ○ | ○ | | | |
| Vehicle Tracking System | ○ | ○ | ○ | ○ | ○ | ○ | ○ | ○ | ○ |
| PACKAGES/EQUIPMENT GROUPS | | | | | | | | | |
| Premium Audio Group — Includes 13 Alpine® speakers, 3rd-row USB charge port, Uconnect 4 with 8.4-inch Display and 8-way passenger front seat | | | | ○ | | | | | |
| 20-Speaker Harman Kardon® Sound Group — Includes 20 speakers and 760-watt amplifier | | | | | ○ | ○ | | | • |
| Advanced SafetyTec Group — Includes Advanced Brake Assist (acoustic windshield and 7-inch color display on Touring L models), FCW+ ²⁴ rain-sensitive windshield wipers, Auto High-Beam Headlamp Control, Adaptive Cruise Control (ACC) with Stop and Go ²⁵ LaneSense LDW+ ²⁶ BSM ²³ Surround-View Camera ²³ ParkSense Front and Rear Park Assist with Stop ²³ Parallel and Perpendicular Park Assist with Stop ²³ | | | | ○ | ○ | ○ | | | • |
| S Appearance Package — Includes body-color door handles, Black Stow 'n Place® roof rack, body-color mirrors on Limited, Black Chrysler grille wing badge, "S" badge, Black badging, Black daylight opening moldings, Black grille surrounds, leather-wrapped steering wheel on Touring, 18-inch Black Noise aluminum wheels, Black spear appliqué rear fascia and unique S Appearance Package seats | | | | ○ | ○ | ○ | | | |
| Interior Protection Package — Includes all-weather floor mats, rear cargo bin Stow 'n Go® storage, rear cargo liner, all-weather cargo floor mats and bright door sills | ○ | ○ | ○ | ○ | ○ | ○ | | | |
| SafetyTec Group — Includes ParkSense Rear Park Assist with Stop ²³ BSM ²³ Rear Cross-Path Detection System ²³ and power front windows with one-touch up/down on Pacifica L model | • | • | • | • | • | • | • | • | • |
| 8-Passenger Seating and 20-inch Wheels Group (deletes Tri-Pane Panoramic Sunroof) | | | | | | ○ | | | |
| Trailer Tow Group — Includes trailer tow 4-/7-pin wiring harness, Class II 2-inch hitch receiver, Trailer Sway Damping ³⁰ heavy-duty radiator and 220-amp alternator on Touring Plus, Touring L and Limited | | | ○ | ○ | ○ | ○ | | | |
| Uconnect Theater with Wireless Streaming Package — Includes 220-amp alternator, 115-volt auxiliary power outlet, wireless headphones, video remote control, HDMI input, 3rd-row USB charge port, two 10-inch seatback touchscreens, video USB port, Blu-ray®/DVD player | | | | | • | ○ | | | • |

• = Included. P = Available within Package noted. ○ = Optional.

WARRANTIES²¹

Chrysler Brand vehicles are covered by an FCA US LLC 3-Year or 36,000-Mile Basic Limited Warranty²¹ (excludes normal maintenance and wear items), as well as a 5-Year or 60,000-Mile Powertrain Limited Warranty²¹ that is fully transferable and includes Roadside Assistance services: Flat Tire, Lockout, Towing, Out of Gas/Fuel Delivery and Battery Jump Assistance. Ask your dealer for details and a copy of these limited warranties.²¹

AUTOMOBILITY PROGRAM

The FCA US LLC Automobility Program provides aftermarket reimbursement incentives on adaptive vehicle upfit equipment in order to help provide safe and reliable vehicle modifications to enhance accessibility for all people. For more information, call (800) 255-9877 or visit chryslerautomobility.com

SIRIUSXM® SATELLITE RADIO¹⁴

SiriusXM Satellite Radio¹⁴ delivers over 160 channels, including commercial-free music, sports, news, talk, entertainment, traffic and weather. Factory-installed SiriusXM Satellite Radio¹⁴ includes a one-year subscription. For more information, go to siriusxm.com

OFFICIAL CHRYSLER OWNER SITE & APP

Your Chrysler Brand vehicle ownership gives you exclusive access to personalized vehicle information, service and maintenance records, recall notifications, roadside assistance, special offers and more through whatever device you prefer — desktop, tablet or smartphone! Register for your Chrysler Vehicle Owner Site account at mopar.com/chrysler or download the **Chrysler For Owners app** for free at either the App or Google Play stores.



Earn 3 points per \$1 on qualifying purchases made at FCA US LLC dealerships, 2 points per \$1 on qualifying travel purchases and 1 point per \$1 on qualifying purchases everywhere else with the new Chrysler MasterCard.³¹ Points may be redeemed at your local dealership for cash off your new or used vehicle, accessories, parts or service — including your next oil change. Or choose from hundreds of other rewards, including travel, cash back to your account, merchandise or gift cards.³¹ For more information or to apply, visit ChryslerCard.com

MOPAR® VEHICLE PROTECTION

Mopar Vehicle Protection[®] has a vested interest in your satisfaction and owner experience with your new Chrysler Brand vehicle. This is the only extended protection provider backed by the manufacturer, FCA US LLC. We stand behind every Mopar Vehicle Protection plan with certified, factory-trained technicians and the use of authentic Mopar parts. Your plan is honored at over 2,600 dealerships within the United States, Canada, Puerto Rico and Mexico. Be sure to ask for a Mopar Vehicle Protection plan at your dealership, call (800) 442-2666 or visit moparvehicleprotection.com

JOIN IN

Join fellow enthusiasts and tell your story by posting comments, participating in discussions, and sharing your Chrysler vehicle photos and videos. Join our community on Facebook (facebook.com/Chrysler), follow us on Twitter (twitter.com/Chrysler), YouTube (youtube.com/TheChryslerChannel), Google+ (plus.google.com/+Chrysler), Pinterest (pinterest.com/Chrysler) and check us out on Instagram (instagram.com/Chrysler). Thank you for following.

GO MOBILE

Take an engaging, multimedia tour of your Pacifica on your mobile device. Log on to the Chrysler.com mobile site for a comprehensive, at-a-glance review of what you need to know about your vehicle. Experience interactive demonstrations of the entire lineup, gaining access to product information at your fingertips, wherever you go.



CHRYSLER MERCHANDISE

Bring Chrysler Brand distinction to your lifestyle both in and outside your vehicle with apparel, personal accessories, gift cards and more. Shop the complete line at collection.chrysler.com



(1) Based on the latest available competitive information and the FCA US LLC Premium Minivan segment. (2) Based on available features and the latest available competitive information and the FCA US LLC Premium Minivan segment. (3) Be sure to follow all instructions in Owner's Manual for removal. (4) Based on the latest available competitive information and the FCA US LLC Premium Minivan segment. Excludes other FCA US LLC vehicles. (5) Wi-Fi subscription required. Vehicle must be registered with Uconnect Access and fulfill minimum subscription requirements. Vehicle must be properly equipped and in active and usable cellular range for Wi-Fi usage. Wi-Fi Hotspot does not enable direct communication between multiple in-vehicle devices. Factors affecting the performance of Wi-Fi Hotspot include: cellular network, signal strength and quality, time of day, number of channels used by the service provider, type of connection, number of clients using Wi-Fi Hotspot and client device. This feature is not intended for use by the driver while the vehicle is in motion. Always drive safely. (6) All SiriusXM Guardian-equipped vehicles come with a 12-month complimentary trial effective on the date of purchase or lease of a new vehicle. Enrollment in the trial is required to receive service. Upon expiration of the trial period, purchase of a subscription is required to continue SiriusXM Guardian. SiriusXM Guardian is available only on equipped vehicles purchased within the United States, Puerto Rico and Canada. Services can only be used where cellular coverage is available. See Uconnect and SiriusXM Guardian Terms of Service for complete service limitations. (7) Siri Eyes Free requires an iPhone equipped with Siri. Certain features not available while the vehicle is in motion. iPhone must be within active cellular range. Customer's existing iPhone data rates apply to Internet-supported features. (8) Requires a mobile phone equipped with the Bluetooth Hands-Free Profile. Visit UconnectPhone.com for system and device compatibility. (9) In the event of a medical or other emergency, press the SOS button to be connected to a Customer Care agent who can direct emergency assistance to your vehicle's location. (10) Roadside Assistance Call connects you directly to an agent who can provide the vehicle's location to the Roadside Assistance Service. Vehicle must be within the United States, Puerto Rico or Canada to have network coverage. Additional roadside assistance charges may apply. Check warranty for details. (11) Remote Vehicle Start not available on all vehicles. You are responsible for using remote features in accordance with any laws, rules or ordinances in effect wherever you operate your vehicle. (12) Send & Go requires a vehicle equipped with a Uconnect 8.4 Navigation unit. To use Send & Go, you must have the SiriusXM Guardian mobile app installed on a compatible smartphone and have an active subscription to SiriusXM Guardian. (13) Active SiriusXM Guardian subscription is required to use this service. Stolen vehicle police report required. Always notify law enforcement if your vehicle is stolen and do not attempt to recover it on your own. (14) SiriusXM audio and data services each require a subscription sold separately or as a package by Sirius XM Radio Inc. Your SiriusXM service will automatically stop at the end of your trial unless you decide to subscribe. **If you decide to continue service after your trial, the subscription plan you choose will automatically renew thereafter and you will be charged according to your chosen payment method at then-current rates.** Fees and taxes apply. To cancel, you must call SiriusXM at 1-866-635-2349. See SiriusXM Customer Agreement for complete terms at www.siriusxm.com. All fees and programming subject to change. Not all vehicles or devices are capable of receiving all services offered by SiriusXM. Current information and features may not be available in all locations or on all receivers. (15) Android Auto uses your smartphone's data plan. Additional charges may apply. To use Android Auto, you must be in an area with cellular coverage. Requires the Android Auto app on Google Play and on Android compatible smartphone running Android 5.0 Lollipop or higher. (16) Apple CarPlay uses your smartphone's data plan. Additional charges may apply. To use Apple CarPlay, you must be in an area with cellular coverage. (17) Based on available competitive information. (18) Based on EPA-estimated 84 MPG, 32 mpg combined and 33 miles all-electric range rating. Actual mileage may vary. (19) Requires purchase and professional installation. See your Chrysler dealer for details. (20) Based on the latest available competitive information and FCA US LLC Premium Minivan segment MPGe rating based on EPA-estimated fuel economy rating. Actual mileage may vary. (21) Transferable. See dealer for complete details and a copy of the warranty. (22) Always check visually for vehicles prior to changing lanes. (23) Always look before proceeding. An electronic drive aid is not a substitute for conscientious driving. Always be aware of your surroundings. (24) This system is not intended to avoid collisions on its own, nor can FCW detect every type of potential crash. The driver must remain aware of traffic conditions and be prepared to brake and steer to avoid potential collisions at all times. (25) This system is a driver convenience system, not a substitute for active driver involvement. The driver must remain aware of traffic conditions and be prepared to use the brakes to avoid collisions. (26) This system is a driver convenience system, not a substitute for active driver involvement. The driver must remain aware of traffic conditions and maintain control of the vehicle. (27) Not compatible with all garage door openers. (28) Voice Text Reply and Voice Texting features require a compatible mobile device enabled with Bluetooth Message Access Profile (MAP). iPhone and some other smartphones do not currently support Bluetooth MAP. Visit www.UconnectPhone.com for system and device compatibility. Ensure MAP is ON and incoming message notification is enabled. Vehicle must be registered for Uconnect Access and you must fulfill minimum subscription requirements. Also requires the use of a compatible smartphone that supports text messaging and Bluetooth. Check UconnectPhone.com for device compatibility. (29) The Advanced Front Air Bags in this vehicle are certified to the new U.S. Federal regulations for Advanced Air Bags. Children 12 years old and younger should always ride buckled up in a rear seat. Infants in rear-facing child restraints should never ride in the front seat of a vehicle with a passenger front air bag. All occupants should always wear lap and shoulder belts properly. (30) No system, no matter how sophisticated, can repeal the laws of physics or overcome careless driving actions. Performance is limited by available traction, which snow, ice and other conditions can affect. When the ESC warning lamp flashes, the driver needs to use less throttle and adapt speed and driving behavior to prevailing road conditions. Always drive carefully, consistent with conditions. Always wear your seat belt. (31) Complete details, including restrictions, limitations and exclusions, will be available when you become a Cardmember. MasterCard is a registered trademark of MasterCard International Incorporated. This card is issued by First Bankcard, a division of First National Bank of Omaha, pursuant to a license by MasterCard International Incorporated.

©2017 FCA US LLC. All Rights Reserved. Chrysler, Dodge, Jeep, Ram, the Chrysler wing design, Automobility Program, Imported From Detroit, KeySense, LaneSense, Mopar, the Mopar Owner Connect design, Mopar Vehicle Protection, Pacifica, ParkSense, ParkView, Pentastar, Stow 'n Go, Stow 'n Place and Uconnect are registered trademarks, and Keyless Enter 'n Go, SaffeyTec and Stow 'n Vac are trademarks of FCA US LLC.

Alpine and the Alpine logo are registered trademarks of Alpine Electronics, Inc. All rights reserved. Google Maps, Google Play, Google+ and YouTube are registered trademarks, and Android Auto is a trademark of Google Inc. All other trademarks are the property of their respective owners. iPhone, iTunes and Siri are registered trademarks, and Apple CarPlay is a trademark of Apple Inc. Bluetooth is a registered trademark of Bluetooth SIG, Inc. Blu-ray is a registered trademark of Blu-ray Disc Association, LLC. Facebook and logo are registered trademarks of Facebook, Inc. Harman Kardon is a registered trademark and GreenEdge is a trademark of Harman International Industries, Inc. Instagram is a registered trademark of Instagram, Inc. Pinterest is a registered trademark of Pinterest, Inc. RIDGID is a registered trademark of RIDGID, Inc. Sirius XM Connected Vehicles Services Inc., Sirius, XM, SiriusXM and SiriusXM Guardian and all related marks and logos are registered trademarks of Sirius XM Radio Inc. The Twitter name, logo, Twitter T, Tweet and Twitter bird are service marks of Twitter, Inc. in the United States and other countries.

This brochure is a publication of FCA US LLC. All product illustrations and specifications are based upon current information at the time of publication approval. FCA US LLC reserves the right to make changes from time to time, without notice or obligation, in prices, specifications, colors and materials, and to change or discontinue models, which are considered necessary to the purpose of product improvement or for reasons of design and/or marketing.

74-383-3812

